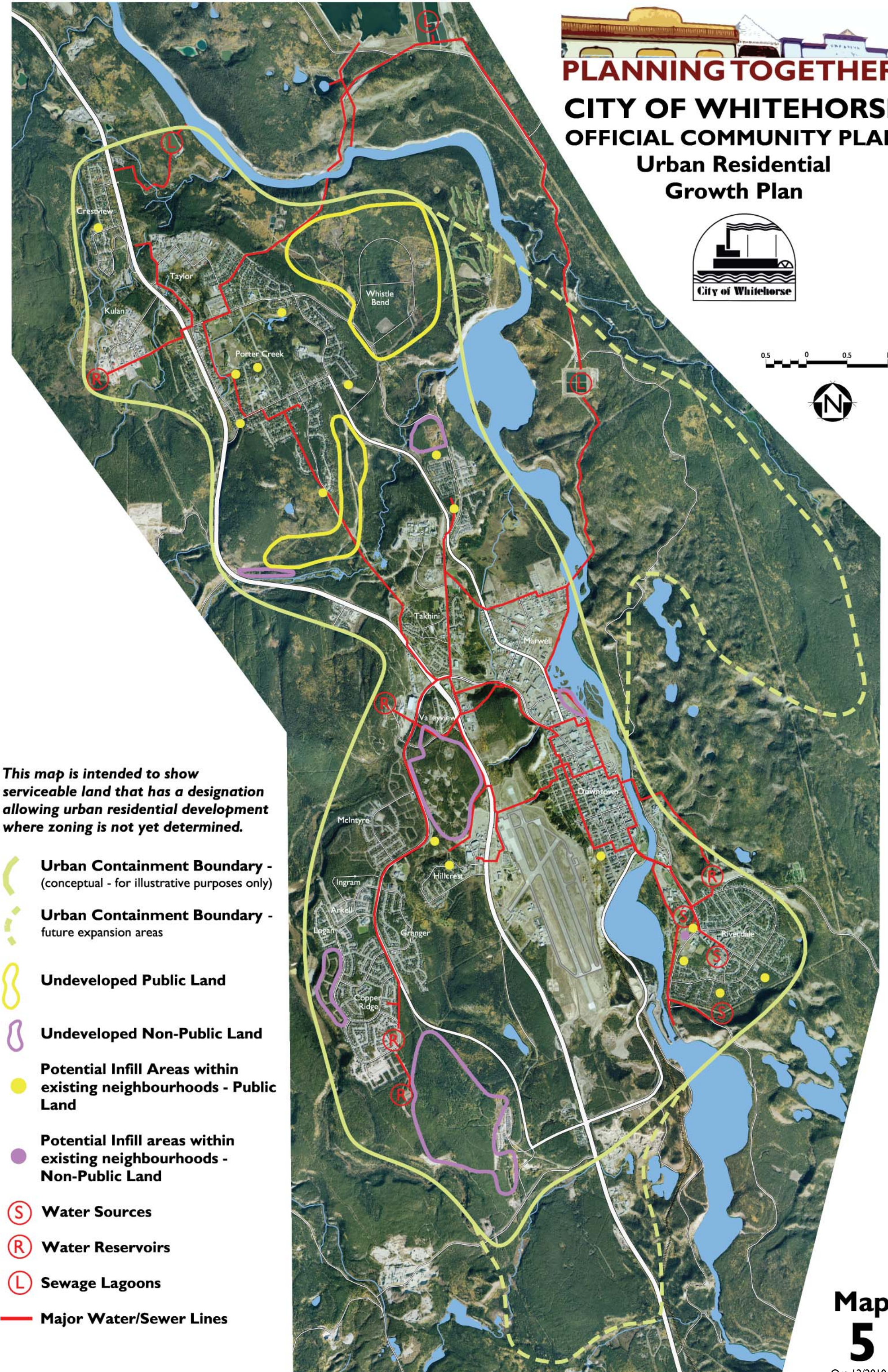


**PLANNING TOGETHER**  
**CITY OF WHITEHORSE**  
**OFFICIAL COMMUNITY PLAN**  
**Urban Residential**  
**Growth Plan**



*This map is intended to show serviceable land that has a designation allowing urban residential development where zoning is not yet determined.*

- Urban Containment Boundary -**  
(conceptual - for illustrative purposes only)
- Urban Containment Boundary -**  
future expansion areas
- Undeveloped Public Land**
- Undeveloped Non-Public Land**
- Potential Infill Areas within**  
existing neighbourhoods - **Public**  
**Land**
- Potential Infill areas within**  
existing neighbourhoods - **Non-Public**  
**Land**
- Water Sources**
- Water Reservoirs**
- Sewage Lagoons**
- Major Water/Sewer Lines**