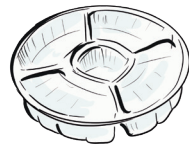


# What goes where? Curbside Recycling Guide

## Blue Box (mixed containers)



Clamshells



Plastic trays



Plastic jars



Blister packs



Plastic containers



Shampoo & soap bottles



Laundry detergent containers



Plant trays



Jar lids



Aluminum trays



Steel cans



Cookie tins



Milk jugs



Milk and juice cartons



Plastic drinking bottles



Aluminum cans



Non beverage cartons



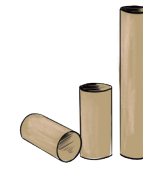
Spray bottles (no butane or paint)



## Yellow Bag (mixed paper)



Mixed paper



Toilet paper tubes



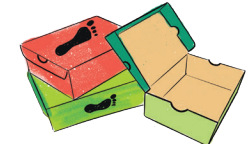
Boxboard



Corrugated cardboard



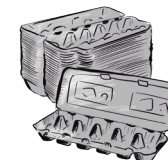
Prescription paper bags



Shoe boxes



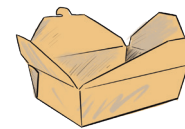
Coffee trays



Egg cartons



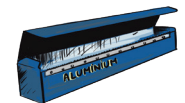
Take-out paper bags



Take out food boxes



Paper cups and bowls  
*If food-soiled, please put in your compost cart.*



Aluminum foil boxes

Large cardboard recycling **must be flattened** and no larger than 91 cm x 91 cm. Place neatly beside the bin.



Return to a refundables depot for refund.

# Helpful hints Curbside Recycling Guide

## How to prepare your recycling for pick up:



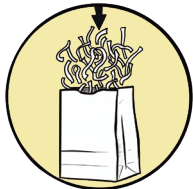
Rinse containers



Remove lids



Flatten materials



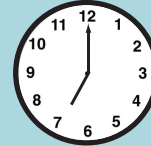
Put shredded paper into the yellow bag



Flatten materials



Cut down large boxes

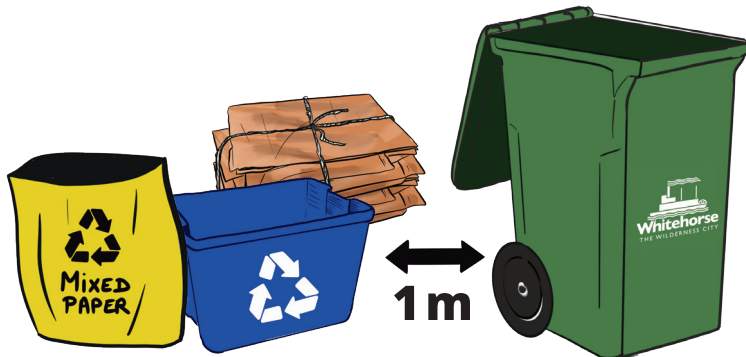


Place bins at the curb or street edge before 7 am.

→ Large cardboard recycling **must be flattened** and no larger than 91 cm x 91 cm. Place neatly beside the bin.

Items that are not properly sorted and set out may not be collected.

→ Each home is entitled to two blue bins and two yellow bags.



[whitehorse.ca/sort](http://whitehorse.ca/sort)

For service related inquiries, contact:

**Whitehorse Blue Bin Recycling**

Email:  
curbside.help@whitehorsebluebins.com

Phone:  
867-687-1615



## Not Accepted

Flexible plastics, styrofoam and glass are not accepted as curbside recycling.



Glass can be brought to Raven ReCentre

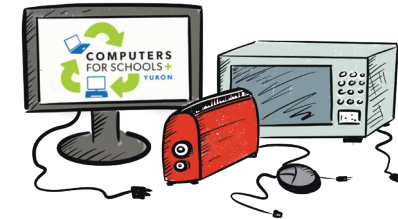
## Refundables

Bring your cans, bottles, milk jugs, etc. to a refundables depot.



## Electronic Waste

Bring to Raven ReCentre's E-Waste Depot.



## Household Hazardous Waste

Bring HHW to the Waste Management Facility.

Saturdays  
9 am to 4 pm

Find out more at:  
[whitehorse.ca/hhw](http://whitehorse.ca/hhw)

